

# a3000 FC

## Wireless AC Clamp

### Quick Reference Guide

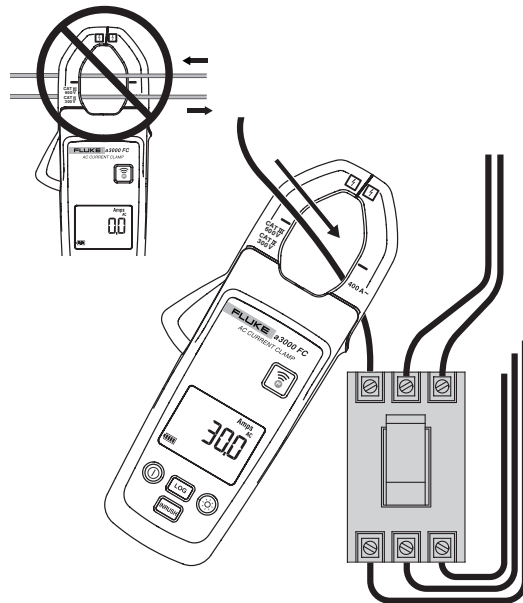
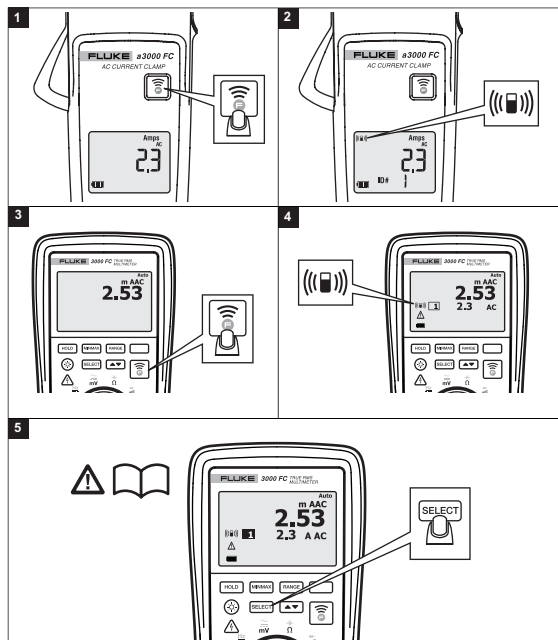
#### ⚠️ Warning

To prevent possible electrical shock, fire, or personal injury, read the “a3000 FC Safety Information” before you use this Product.

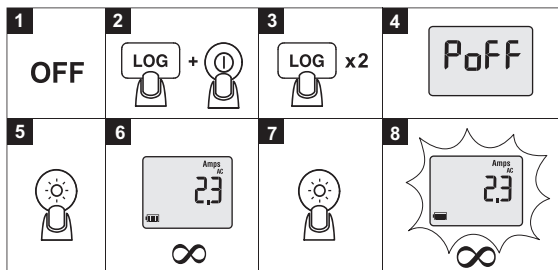
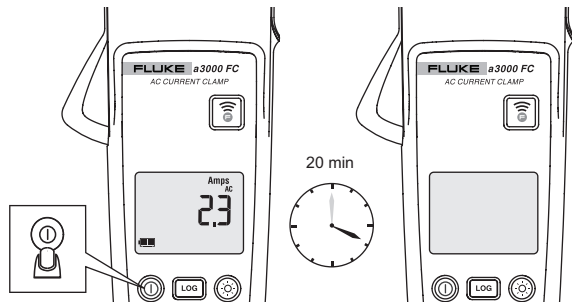
Go to [www.fluke.com](http://www.fluke.com) to register your product and find more information.



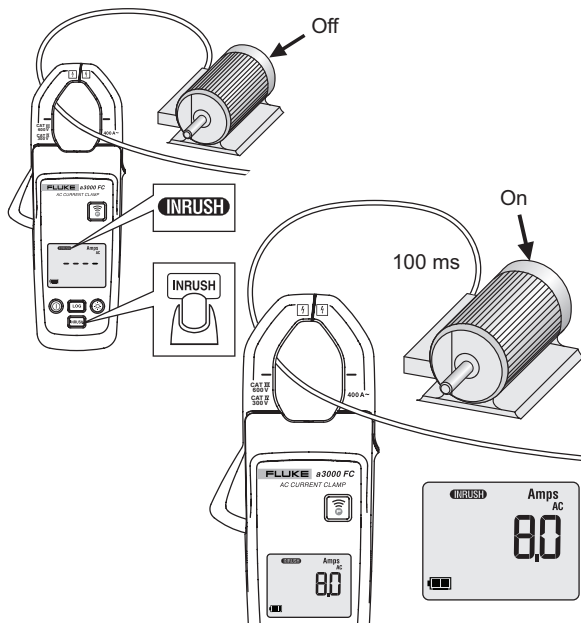
#### Amps



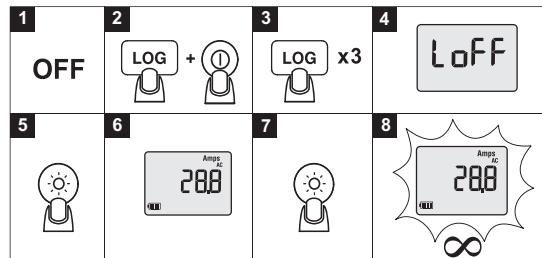
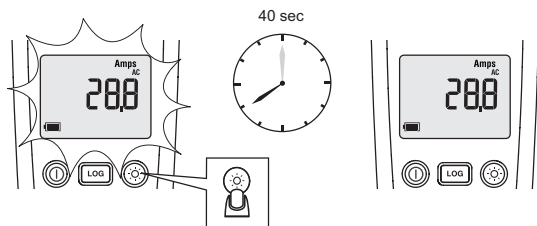
①



INRUSH



⚙️



BATT

